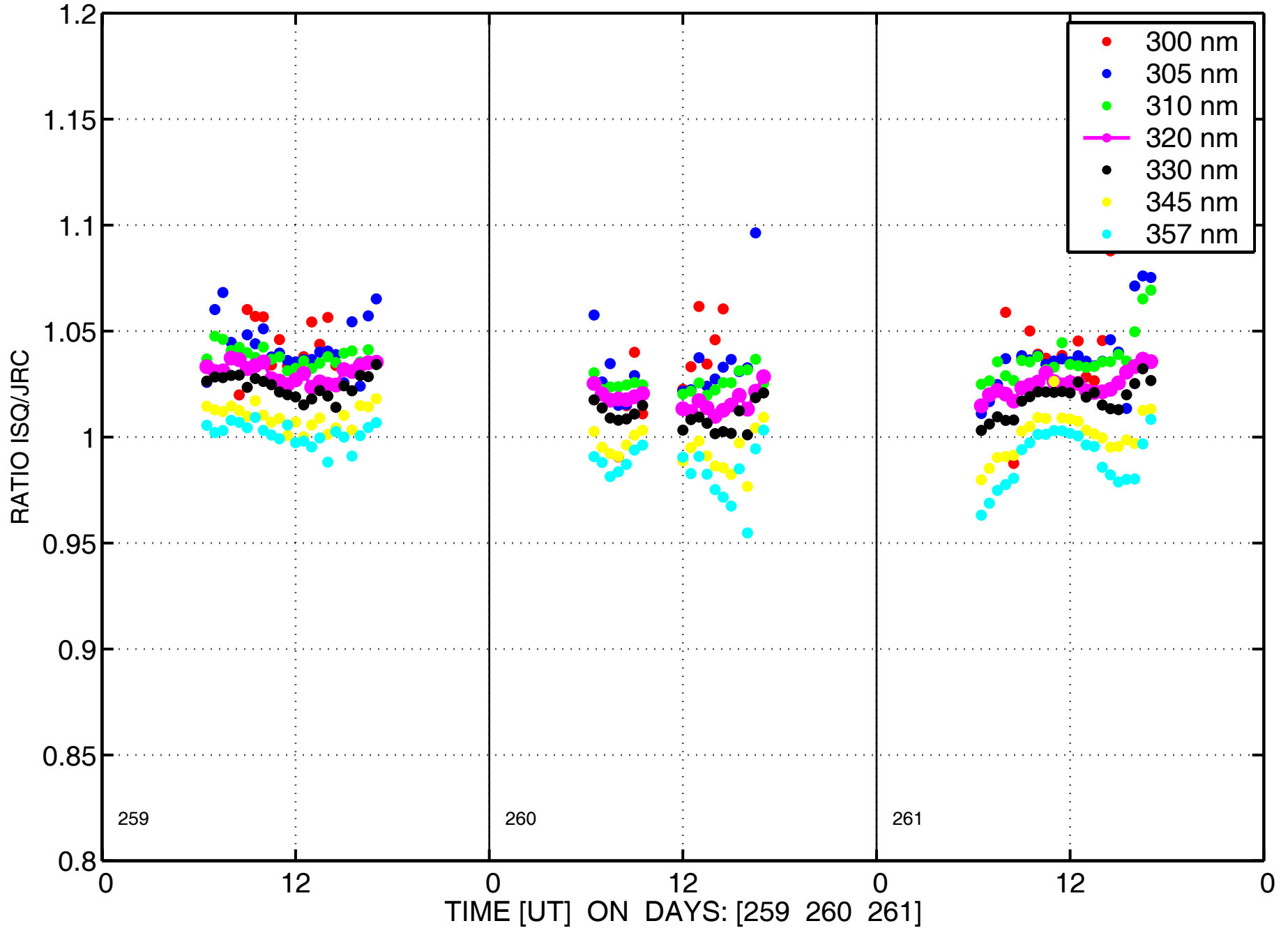
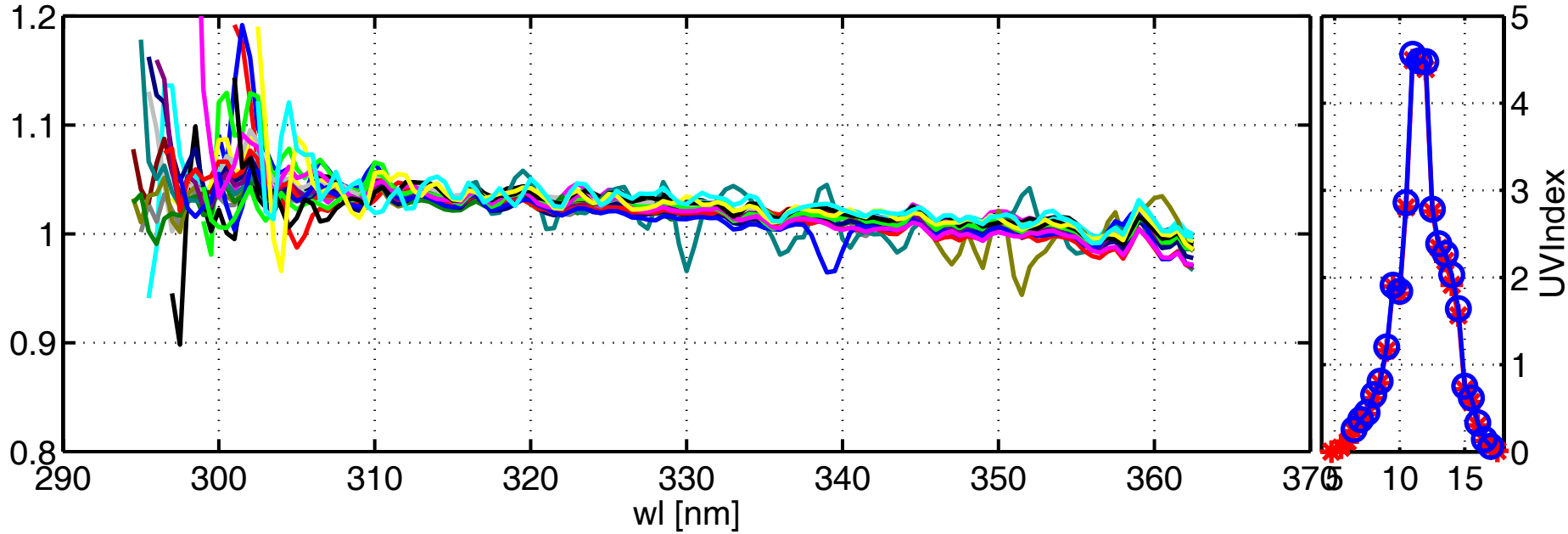


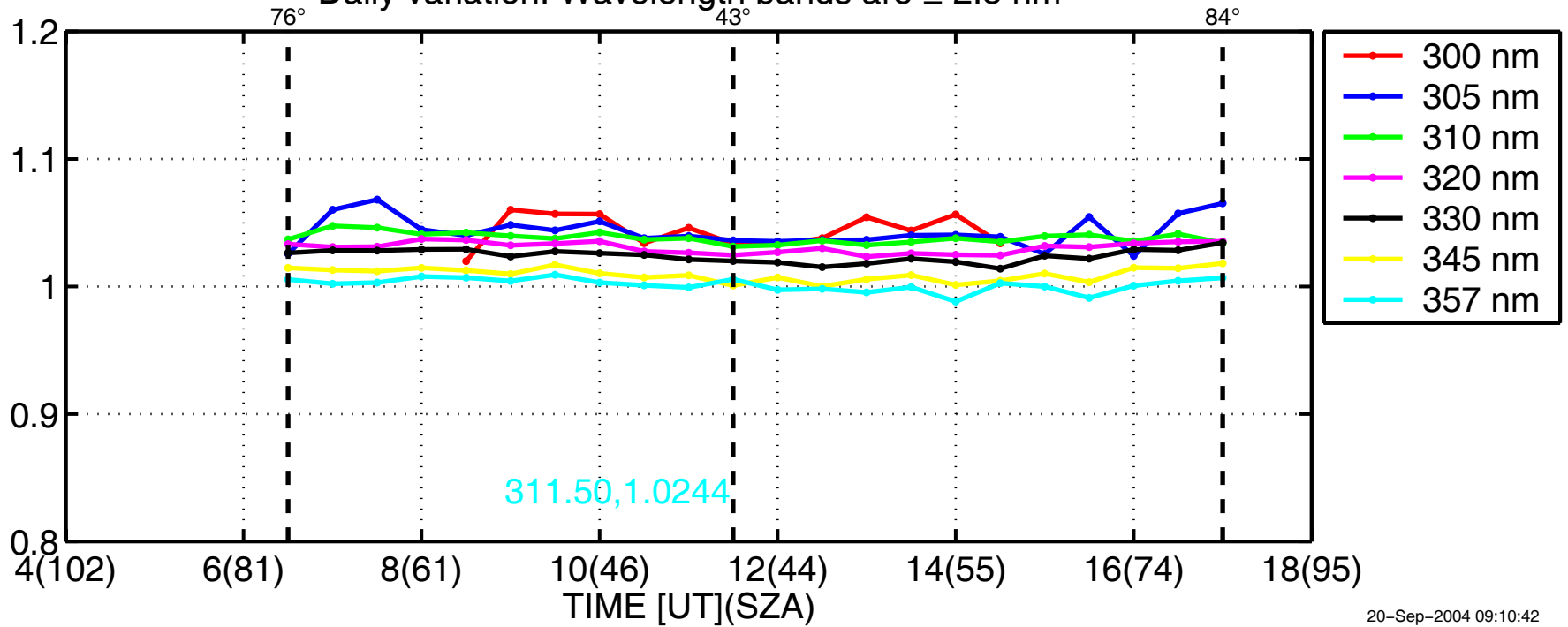
Global irradiance ratios ISQ/JRC at JRC:15-Sep-2004(259) to 17-Sep-2004(261)



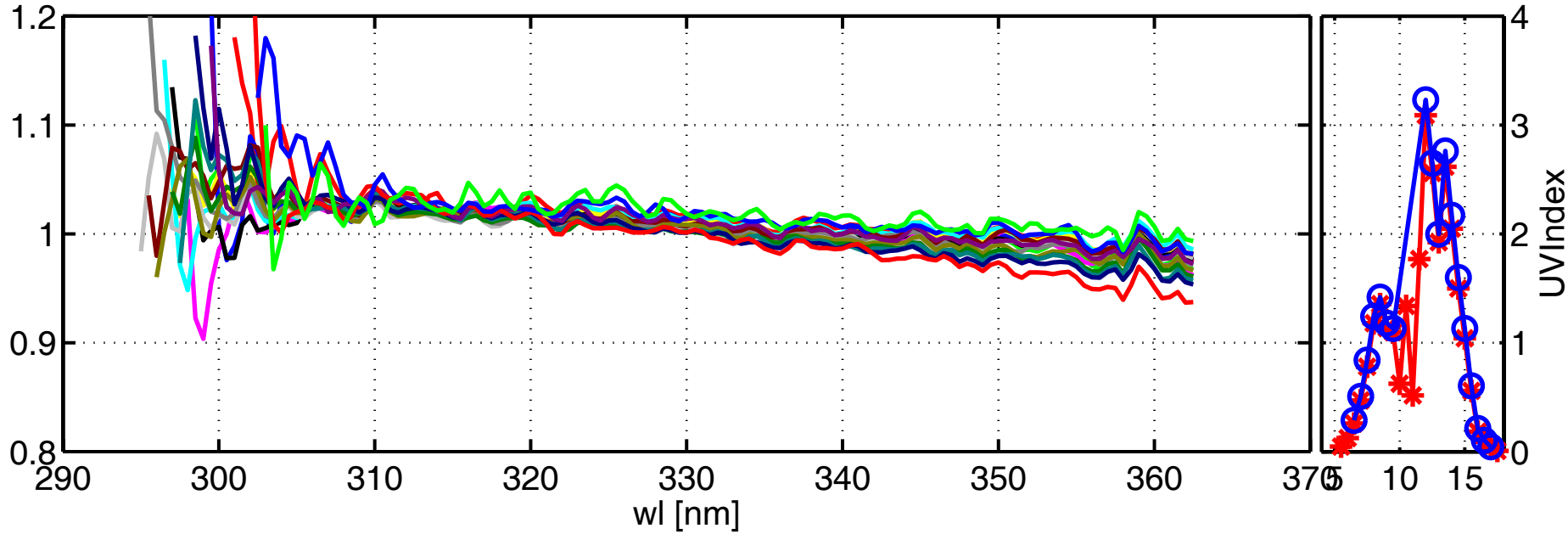
Global irradiance ratios ISQ/JRC at JRC:15-Sep-2004(259)



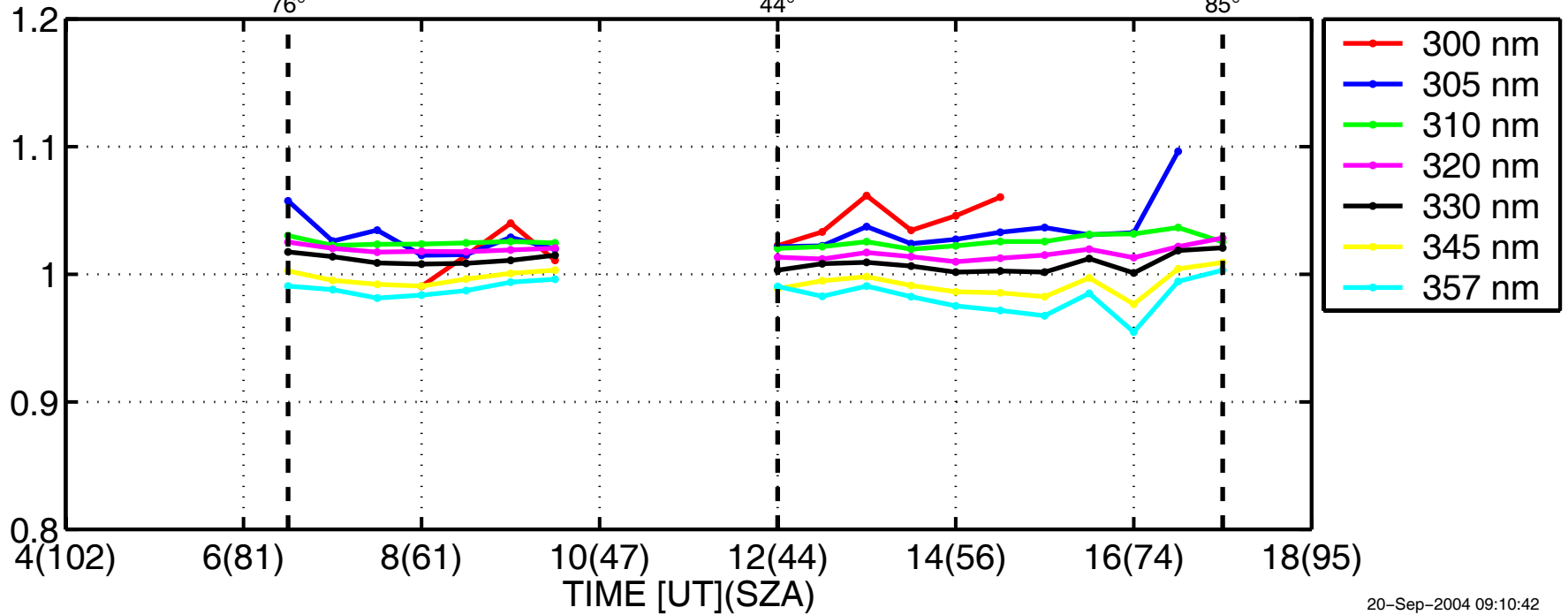
Daily variation. Wavelength bands are ± 2.5 nm



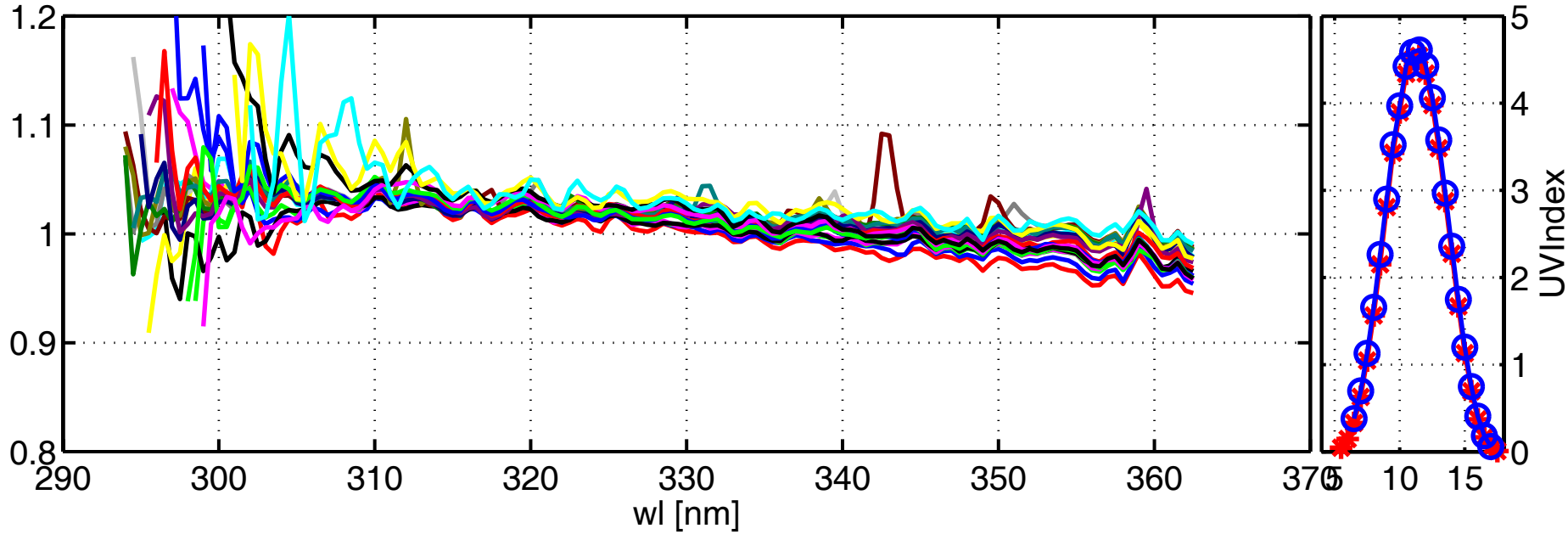
Global irradiance ratios ISQ/JRC at JRC:16-Sep-2004(260)



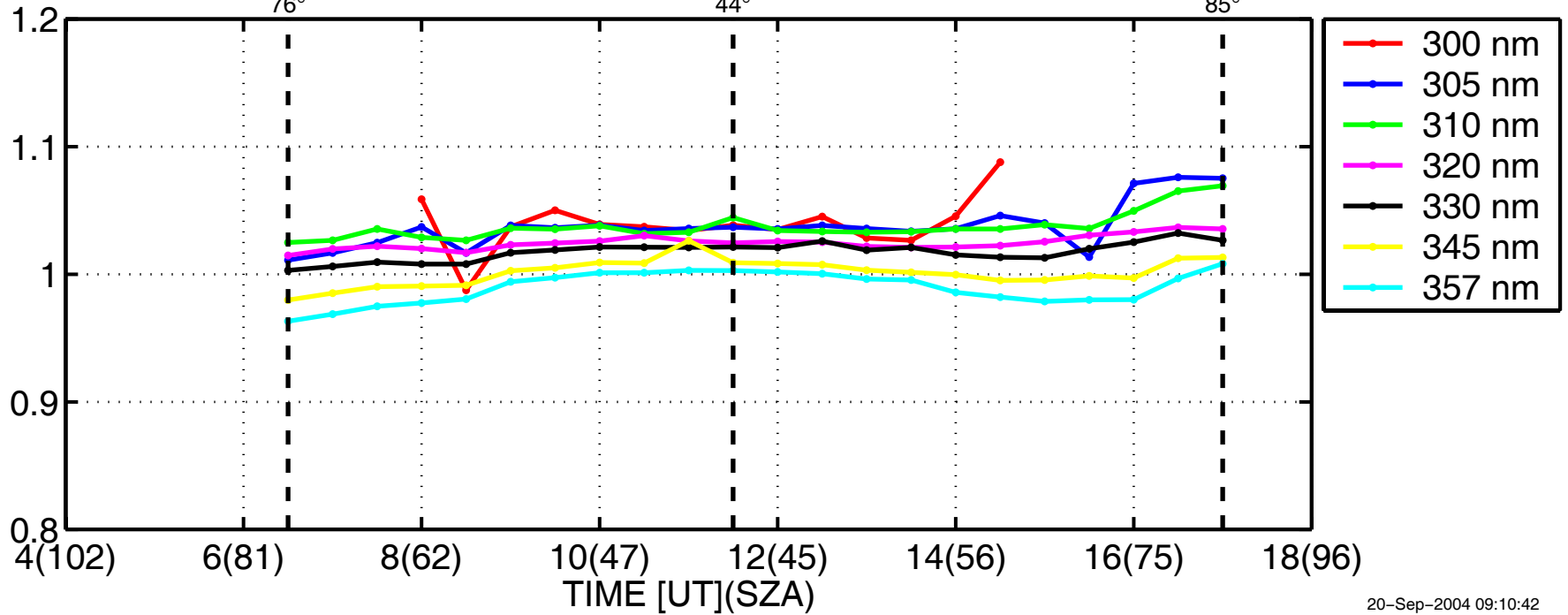
Daily variation. Wavelength bands are ± 2.5 nm



Global irradiance ratios ISQ/JRC at JRC:17-Sep-2004(261)



Daily variation. Wavelength bands are ± 2.5 nm



Mean ratio ISQ/JRC at JRC:15-Sep-2004(259) to 17-Sep-2004(261)

